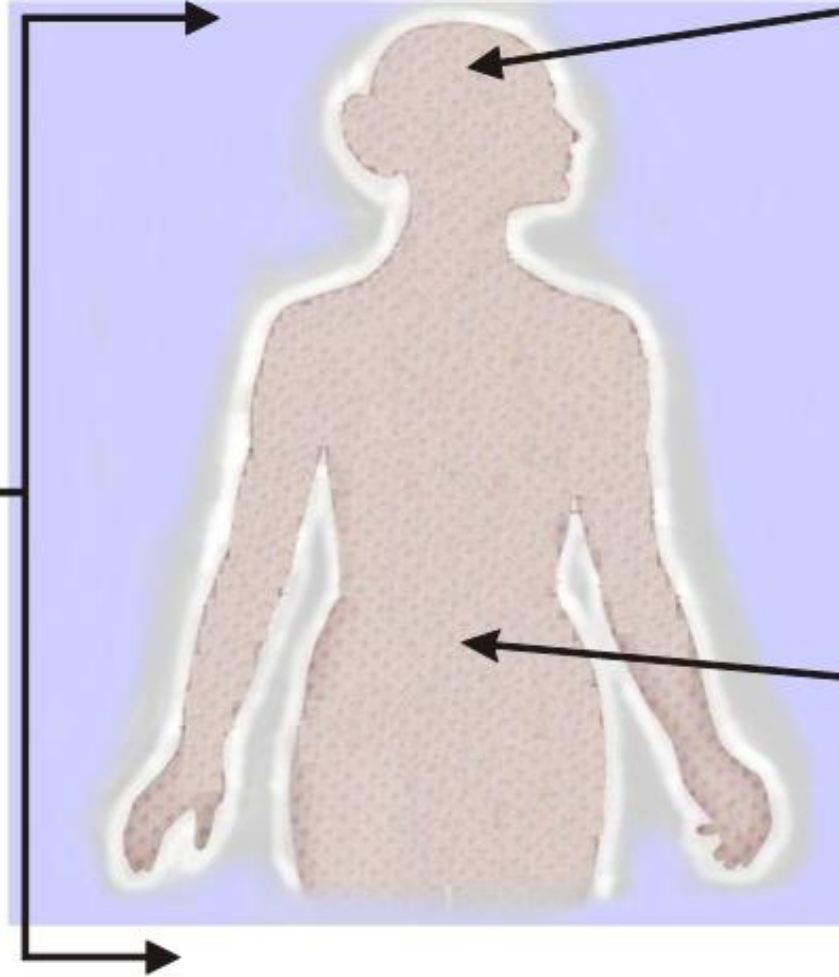




Nutrition Results  
 4200 Regent Street  
 Columbus, OH 43219  
 Ph: 614-944-5123  
 Fax: 215-895-9921  
 Toll Free: 866-396-4438  
 OBD Licence: L0807  
 ADA Registration: R633755  
 www.NutritionResults.com  
 NutritionResults@aol.com

# Clinical Indications For MRT Testing & LEAP Management

Non-IgE mediated adverse food reactions can be an important symptom provoking component in D-IBS, Migraine, and Fibromyalgia. The charts below list clinical parameters that when present, either increase or decrease the likelihood that hypersensitivity reactions play a role in the etiology of the patient's condition.



## Migraine

### Increased Probability

- ⌚ Chronic & frequent >2x per month
- ⌚ Frequent headaches in between episodes
- ⌚ Personal or family Hx of IgE Mediated allergy
- ⌚ Hx of adverse food reactions
- ⌚ Other target indications or secondary indications are co-morbid
- ⌚ Resistant to relief from medication

### Decreased Probability

- ⌚ Infrequent (<1x per month)
- ⌚ Hormonally induced
- ⌚ Weather induced
- ⌚ Trauma induced

## Fibromyalgia

### Increased Probability

- ⌚ Co-morbid diarrhea
- ⌚ Personal or family Hx of IgE Mediated allergy
- ⌚ Hx of adverse food reactions
- ⌚ Other target indications or secondary indications are co-morbid
- ⌚ Resistant to relief from medication

### Decreased Probability

- ⌚ Diarrhea not present
- ⌚ Co-morbid constipation (Unless constipation is due to side effect of medication)

## Irritable Bowel Syndrome

### Increased Probability

- ⌚ Diarrhea component (either D-predominant or Cyclic)
- ⌚ Chronic & frequent
- ⌚ Refractory
- ⌚ Personal or family Hx of IgE Mediated allergy
- ⌚ Hx of adverse food reactions
- ⌚ Other target indications or secondary indications are co-morbid

### Decreased Probability

- ⌚ Constipation predominant
- ⌚ Infrequent attacks (< 2x/month)

## Secondary Indications & Common Co-Morbidities

- |   |   |   |
|---|---|---|
| <ul style="list-style-type: none"> <li>● Functional Diarrhea</li> <li>● Functional Dyspepsia</li> <li>● Recurrent Secondary Headaches</li> <li>● Celiac Sprue</li> <li>● Cyclic Vomiting Syndrome</li> <li>● Functional Abdominal Pain</li> <li>● Inflammatory Bowel Disease</li> </ul> | <ul style="list-style-type: none"> <li>● Chronic Sinusitis</li> <li>● Non-Seasonal Rhinitis</li> <li>● Chronic Sinus Headaches</li> <li>● Chronic Otitis Media w/effusion</li> <li>● Angioedema</li> <li>● Chronic Urticaria</li> <li>● Eczema</li> </ul> | <ul style="list-style-type: none"> <li>● Autism Spectrum Disorders</li> <li>● Attention Deficit Disorder</li> <li>● Depressive/Anxiety Disorders</li> <li>● Hyperactivity with or w/o A.D.D.</li> <li>● Arthralgia</li> <li>● Inflammatory Arthritis</li> <li>● Chronic Fatigue Syndrome</li> </ul> |
|---|---|---|