

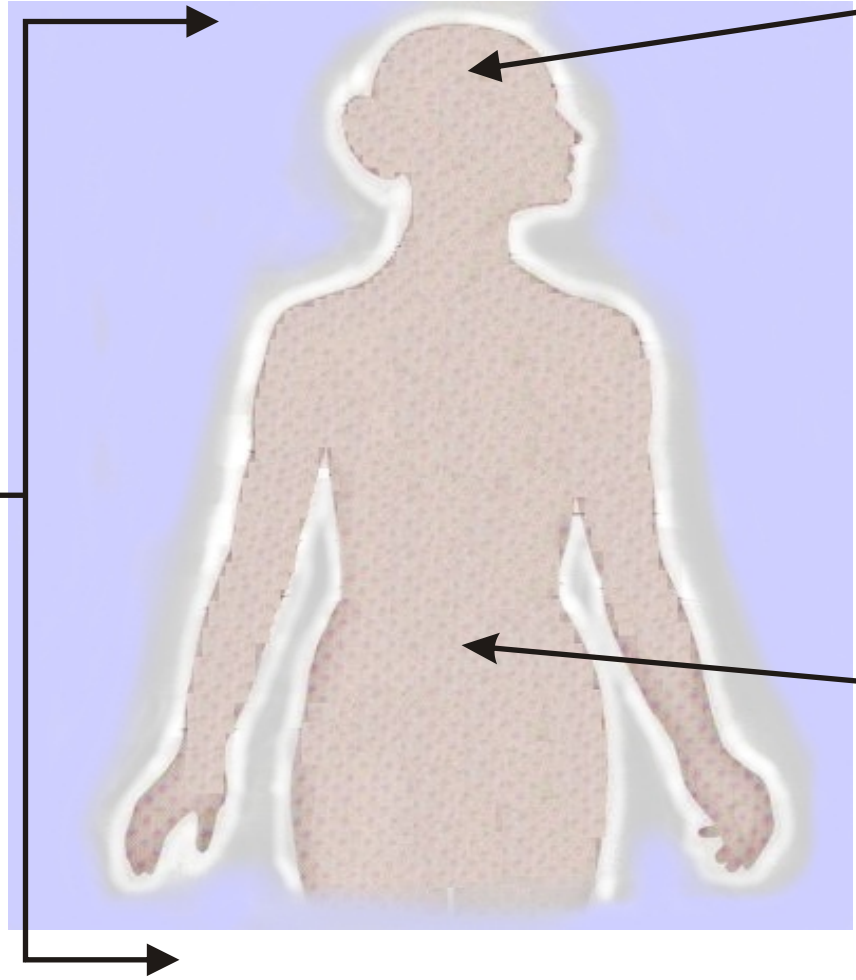
Lifestyle Eating And Performance



Clinical Indications For MRT Testing & LEAP Disease Management

Non-IgE mediated adverse food reactions can be an important symptom provoking component in D-IBS, Migraine, and Fibromyalgia. The charts below list clinical parameters that when present, either increase or decrease the likelihood that hypersensitivity reactions play a role in the etiology of the patient's condition.

For More Information Call:
 Carole Farace, MS, RD, LD, CLT
 Certified LEAP Therapist
 Tel: (407) 856-6949
 Fax: (407) 856-3795



Migraine

Increased Probability

- ⌚ Chronic & frequent >2x per month
- ⌚ Frequent headaches in between episodes
- ⌚ Personal or family Hx of IgE Mediated allergy
- ⌚ Hx of adverse food reactions
- ⌚ Other target indications or secondary indications are co-morbid
- ⌚ Resistant to relief from medication

Decreased Probability

- ⌚ Infrequent (<1x per month)
- ⌚ Hormonally induced
- ⌚ Weather induced
- ⌚ Trauma induced

Fibromyalgia

Increased Probability

- ⌚ Co-morbid diarrhea
- ⌚ Personal or family Hx of IgE Mediated allergy
- ⌚ Hx of adverse food reactions
- ⌚ Other target indications or secondary indications are co-morbid
- ⌚ Resistant to relief from medication

Decreased Probability

- ⌚ Diarrhea not present
- ⌚ Co-morbid constipation (Unless constipation is due to side effect of medication)

Irritable Bowel Syndrome

Increased Probability

- ⌚ Diarrhea component (either D-predominant or Cyclic)
- ⌚ Chronic & frequent
- ⌚ Refractory
- ⌚ Personal or family Hx of IgE Mediated allergy
- ⌚ Hx of adverse food reactions
- ⌚ Other target indications or secondary indications are co-morbid

Decreased Probability

- ⌚ Constipation predominant
- ⌚ Infrequent attacks (< 2x/month)

Secondary Indications & Common Co-Morbidities

- | | | |
|---|---|---|
| <ul style="list-style-type: none"> ● Functional Diarrhea ● Functional Dyspepsia ● Recurrent Secondary Headaches ● Celiac Sprue ● Cyclic Vomiting Syndrome ● Functional Abdominal Pain ● Inflammatory Bowel Disease | <ul style="list-style-type: none"> ● Chronic Sinusitis ● Non-Seasonal Rhinitis ● Chronic Sinus Headaches ● Chronic Otitis Media w/effusion ● Angioedema ● Chronic Urticaria ● Eczema | <ul style="list-style-type: none"> ● Autism Spectrum Disorders ● Attention Deficit Disorder ● Depressive/Anxiety Disorders ● Hyperactivity with or w/o A.D.D. ● Arthralgia ● Inflammatory Arthritis ● Chronic Fatigue Syndrome |
|---|---|---|